

**o v e r z i c h t   s i g n s**

Project naam: McDonald's Nederweert

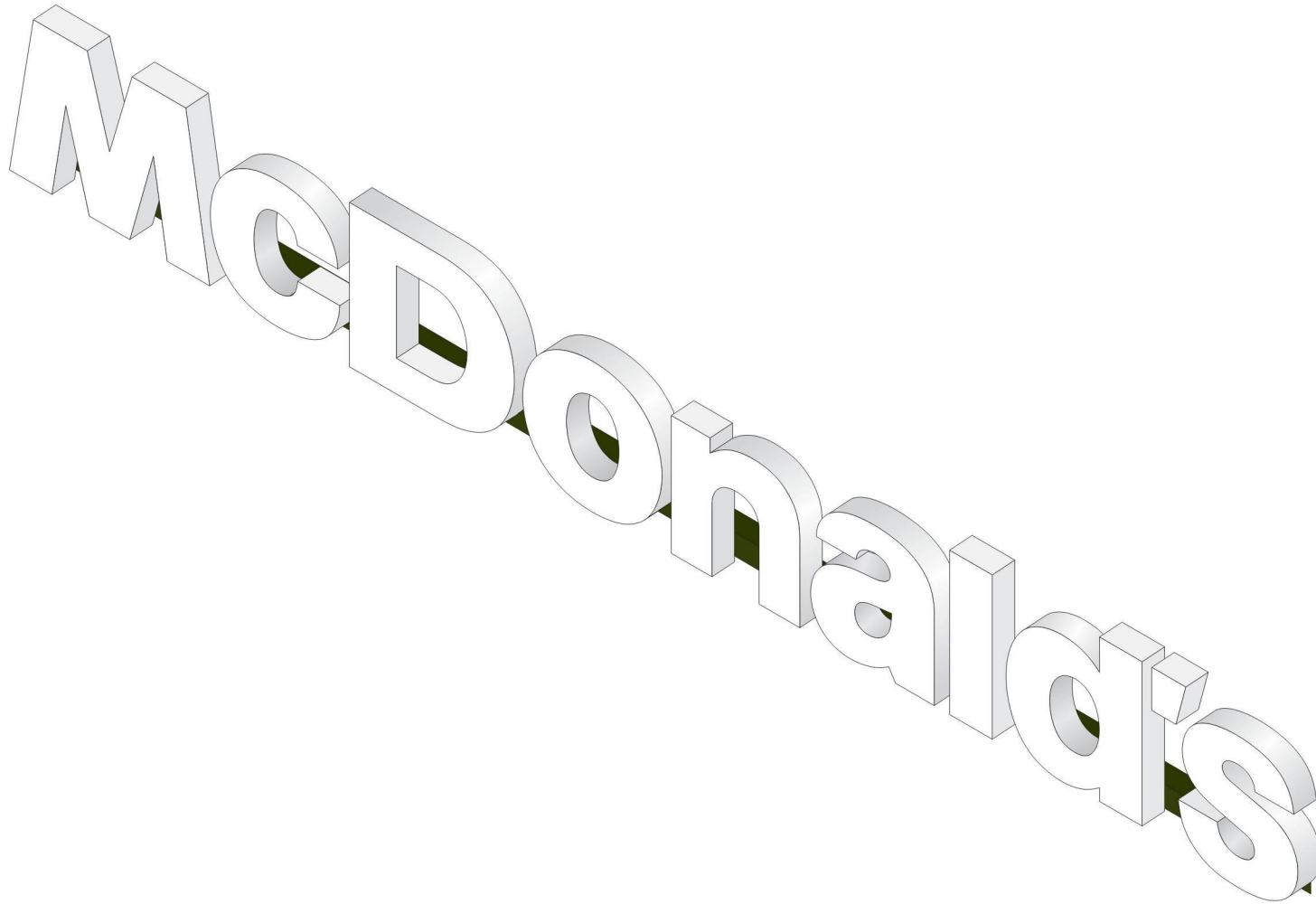
Projectnummer: **I 525-52B**

Datum: 09-12-2019

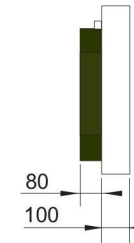
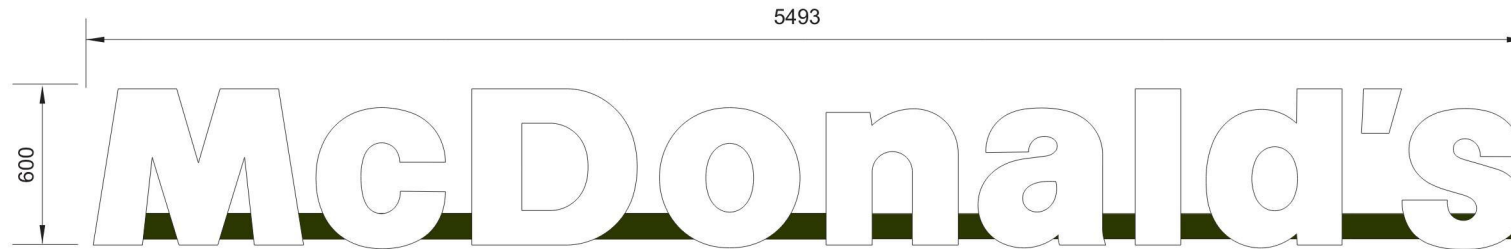
Gewijzigd: -

Inhoud:

Mc Café	(bestaande verplaatsen)
McDonald's	(bestaande verplaatsen)
M	(bestaande verplaatsen)



124-451-001 - McD Fascia 600 mm LED - green Substructure



**Dimensions:** 5493 x 600 x 180 mm

### Design:

2 mm Aluminium-backplate glued with 10 mm Foamex plate. LED modules installed on the Foamex plate. Cover made of 3mm white acrylic glass, case opaque, front of the letters translucent. Cover fixed with screws on the Foamex plate. Single letters are mounted on a substructure made of welded aluminium profiles, coated in dark green - Akzo Nobel MK 120 or brown - RAL 8003.

### Illumination:

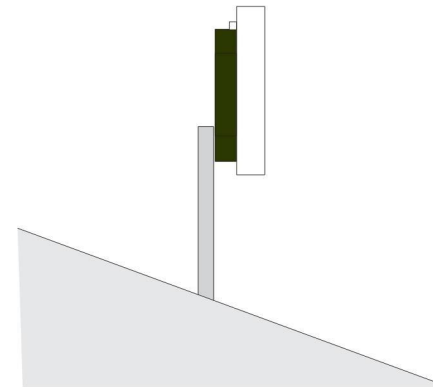
Internal illumination with LED.

### Technical Information:

Nominal Voltage:	230V
Frequency:	50-60 Hz
Connected Load:	184 W
Connecting Cable:	3 x 1,5 mm <sup>2</sup>
Fuse Protection:	C16 A

### Installation:

Roof mounted on a Substructure (to be ordered separately). The substructure has to be installed in advance, roof needs to be sealed by a qualified person after installation of the substructure. Once connected and fitted the sign should be tested for functionality.



### The Sign conforms with the following guidelines:

VDE 0100, VDE 0128, VDE 0711, EN 55015, EN 60598, EN 50107, EN 61547, EN 6100-3-2

### CE conform according to guidelines:

89/336/EWG, 92/31/EWG, 73/23/EWG

## Design:

2 mm Aluminium-backplate glued with 8 mm Foamex plate. LED modules installed on the Foamex plate. Letter Casing and Cover made of thermo-formed 3 mm yellow, flat acrylic glass fixed with screws at Foamex plate.

## Illumination:

Internal illumination with LED.

## Illuminants:

Logo 900: 12 V LED

## Connected load:

20 W

## Technical Information:

Nominal Voltage: 230V  
Frequency: 50-60 Hz  
Connecting Cable: 3 x 1,5 mm<sup>2</sup>  
Fuse Protection: C16 A

## Installation:

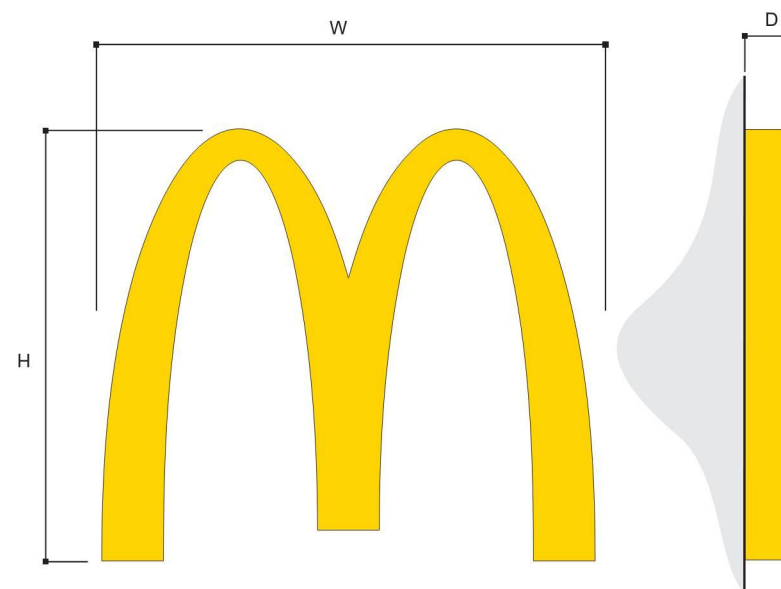
Wall Installation with plugs and screws. The sign is internally cabled and requires on-Site connection to existing Power Supply Cable. Once connected an fitted the sign should be tested for functionality. Sign can also be installed on the roof with a substructure, which has to be ordered seperately.

## The Sign conforms with the following guidelines:

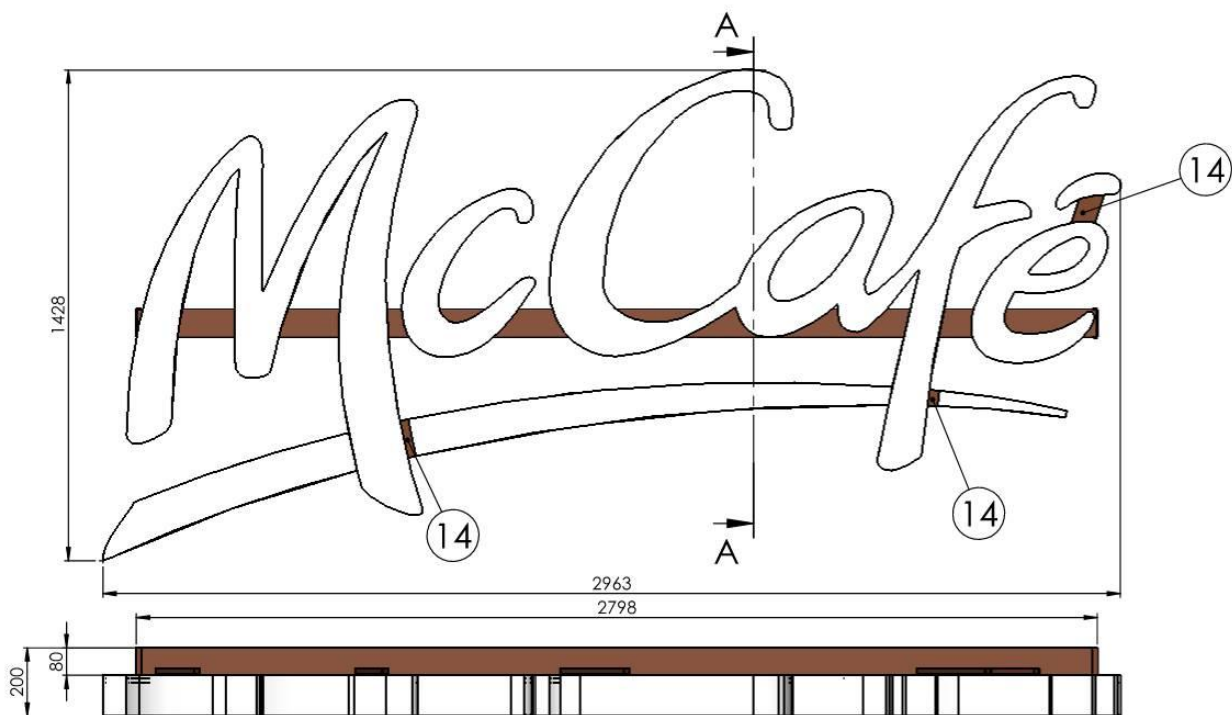
VDE 0100, VDE 0128, VDE 0711, EN 55015, EN 60598, EN 50107, EN 61547, EN 6100-3-2

## CE conform according to guidelines:

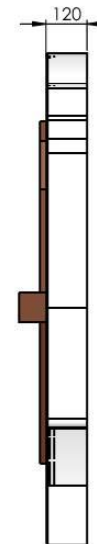
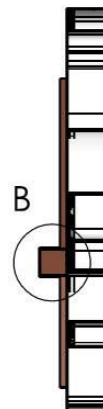
89/336/EWG, 92/31/EWG, 73/23/EWG



# Mc Café logo

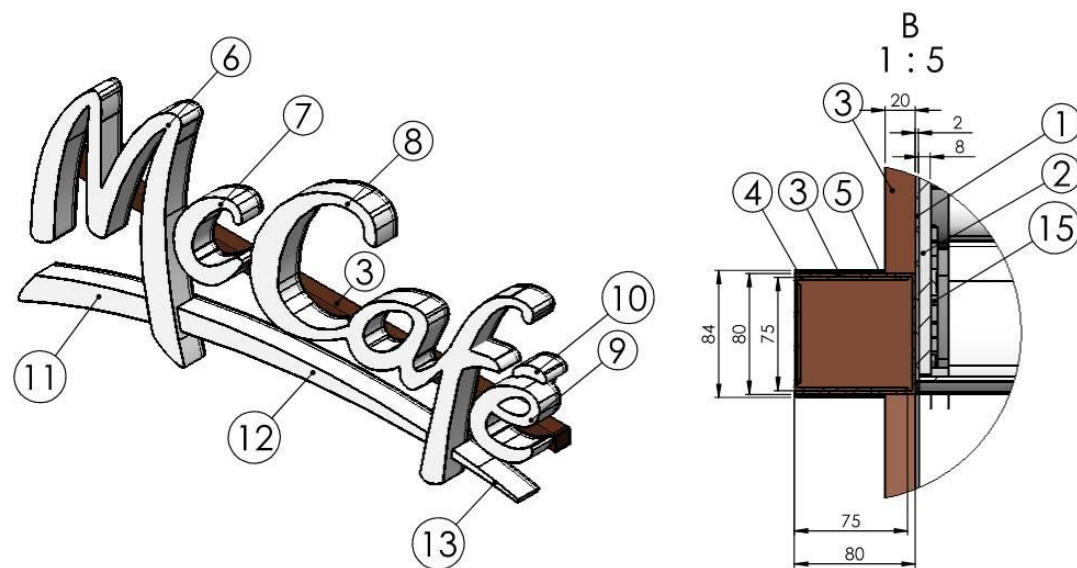


A-A  
1 : 22



Uwaga!

1. Do belki zewnętrznej w miejsce otworów  $\phi 7$  wstrześć nitonakrętki M5.
2. Litery mocować do belki zewnętrznej śrubami M5.
3. Litery przynitować do profili 20x20x2 mm (belka zewnętrzna).
4. Belki skręcać wkrętami soczewkowymi 3,9x13 oc. w rozstawie co 200 mm.
5. Litery skręcać wkrętami do tworzyw sztucznych z łbem z podkładka 3,1x16 V2A - RAL 9010 biały.



Poz	Nazwa Material	Ilość	Nr rysunku Wymiar/Formatka	Nr. materiału Nr. artykułu
15	Elektryka	149	124 661 999-00	
14	Folia Avery 5300/182A Blockout	1	124 661 554	
13	Hauba akrylowa "luna prawa"	1	124 661 009	
12	Hauba akrylowa "luna środkowa"	1	124 661 008	
11	Hauba akrylowa "luna lewa"	1	124 661 007	
10	Hauba akrylowa " " "	1	124 661 006	
9	Hauba akrylowa "e"	1	124 661 005	
8	Hauba akrylowa "Ca"	1	124 661 004	
7	Hauba akrylowa "c"	1	124 661 003	
6	Hauba akrylowa "M"	1	124 661 002	
5	Pokrywa RAL 8003	2	124 661 012	
4	Belka wewnętrzna RAL 8003	1	124 661 011	
3	Belka zewnętrzna RAL 8003	1	124 661 010	
2	Tył PVC	1	124 661 501	
1	Błacha tylna	1	124 661 500	

Tolerancje ogólne General tolerances		Skala Scale	MCDONALD's		124	37,1 kg
EN 22768-1/m		1:20			Nr. projektu Project No.	Masa Weight
A4	Data Date	Nazwisko Name	MCCAFÉ L=3000 mm WEISS -LED-		Długość Length	
Rysował Drawn	2017-10-04		NEW DESIGN 2017		Wysokość Height	
Sprawił Checked	2017-10-04				Głębokość Depth	
Zatwierdził Approved	2017-10-04					
Nr. rysunku Draw.- No.		124 661 001		A-01		
Nr. artykułu Part No.				Stan wykonania/Finished condition		
Zapisany jako/Save as:		124 661 001.SLDDRW				

PRO  
LICHT